



FERMAX

USER SETTINGS

Access user parameters.

1

2

3

1. Date and Time Settings

2. Capture images

With select the icon and confirm with .

1. DATE AND TIME SETTINGS

1

With select the icon and confirm with .

2

With select the date format. Once selected confirm with .

3

Select the date and hour with and confirm with . To browse the settings .

Date not set: 01/01/2017 (default). The icon appears indicating that the date is not correct (default date). Upon losing power, it returns to the default date.

Note: If an image is captured with the date not yet set, the following icon appears .

Notification icons for a date not set:

User Menu Screen



Image Viewer

Communication screen

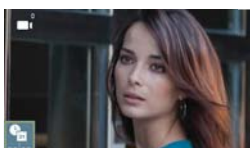
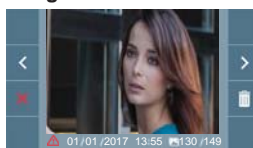


Image viewer screen



2. ACTIVATION/DEACTIVATION OF VIDEO CAPTURE

The monitor can take an automatic picture within 5 seconds of receiving a call from an outdoor panel. According to the European Union legislation about data protection ((EU) 2016/679), the capture of images may be restricted. This feature is deactivated by default in all monitors, although can be activated at your own responsibility. Furthermore, the legislation may force to place a sign next to door stations, indicating that monitors can capture images. You can download it at <https://www.fermax.com/intl/en/corporate/utilities.html>.

1

With select the icon and confirm with .

2

Press to activate/deactivate the function.

3